

# SP HOLLADAY MANOR

105 South Sumter Street  
Sumter, South Carolina 29150  
(803) 778-1111



If you are 55 or older, you can make SP Holladay Manor your residence. Holladay Manor offers you a unique independent living experience at a well-located, beautiful and distinctive apartment community in downtown Sumter – a place called home . . . comfortable, convenient, modern and affordable.

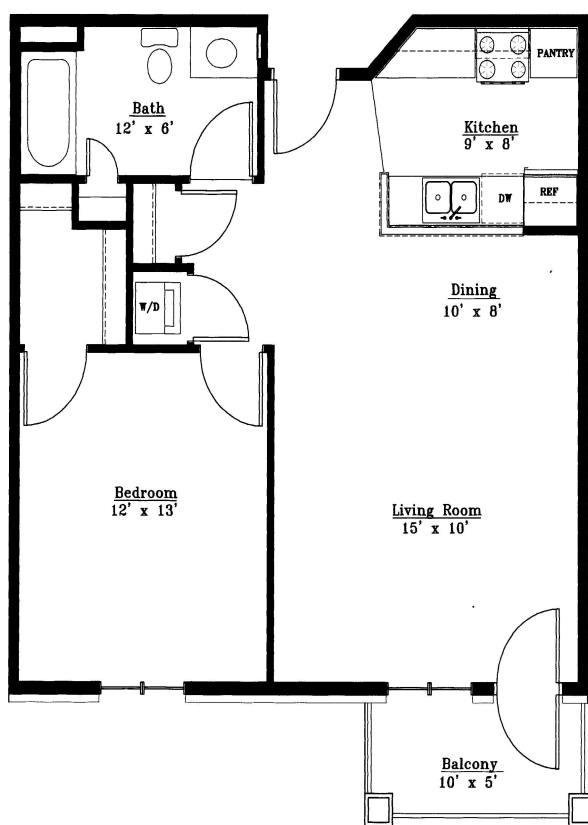
Neighboring properties to Holladay Manor include a new community center for seniors, a pharmacy and medical facilities and a grocery store just a few blocks away. Local bus services are available to bring you to other points, including nearby place of worship and shopping malls.

This exciting community brings together under a single roof many common use amenities for today's active adult living such as on-floor laundries, storage and sitting areas. Our beautiful facilities include an on-site office and community room, an exercise area, a computer room with free internet access, beauty shop, craft room and a private dining room. Each resident's apartment features one or two bedrooms with living/dining area, a fully equipped kitchen including range, refrigerator, dishwasher, garbage disposal and washer-dryer connections, central air and ceiling fans.

The property is fully handicapped accessible and has a few of its apartments designed specifically for disabled individuals.

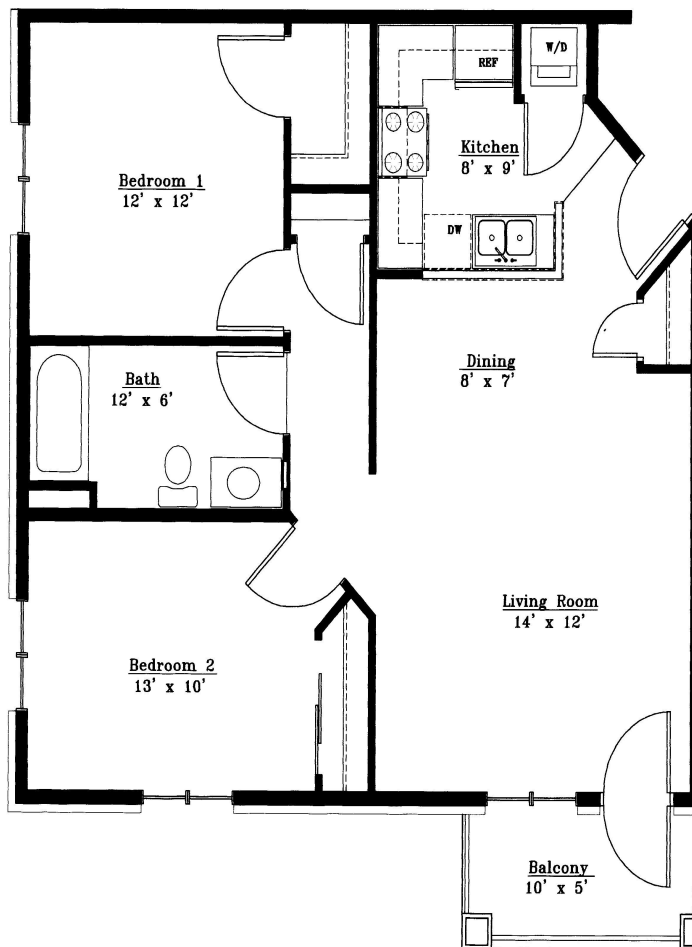
Holladay Manor represents a wonderful way to begin living in the 21<sup>st</sup> Century. It is well-situated, well-designed, well-equipped and well-managed for you. One need not be wealthy to live in this affordable community. In fact, your yearly household income at the time of admission in 2006 may not exceed \$19,560 for one person and \$22,380 for a married or two-person household.

For further information, please contact SP Holladay Manor at (803) 778-1111 or email [holladay@ftc-i.net](mailto:holladay@ftc-i.net).



1-Bedroom Unit w/ Balcony  
N.T.S. 800 sf

800 square feet  
\$430 per month



2-Bedroom Unit w/ Balcony 'C'  
N.T.S. 941 sf

1000 square feet  
\$510 per month